




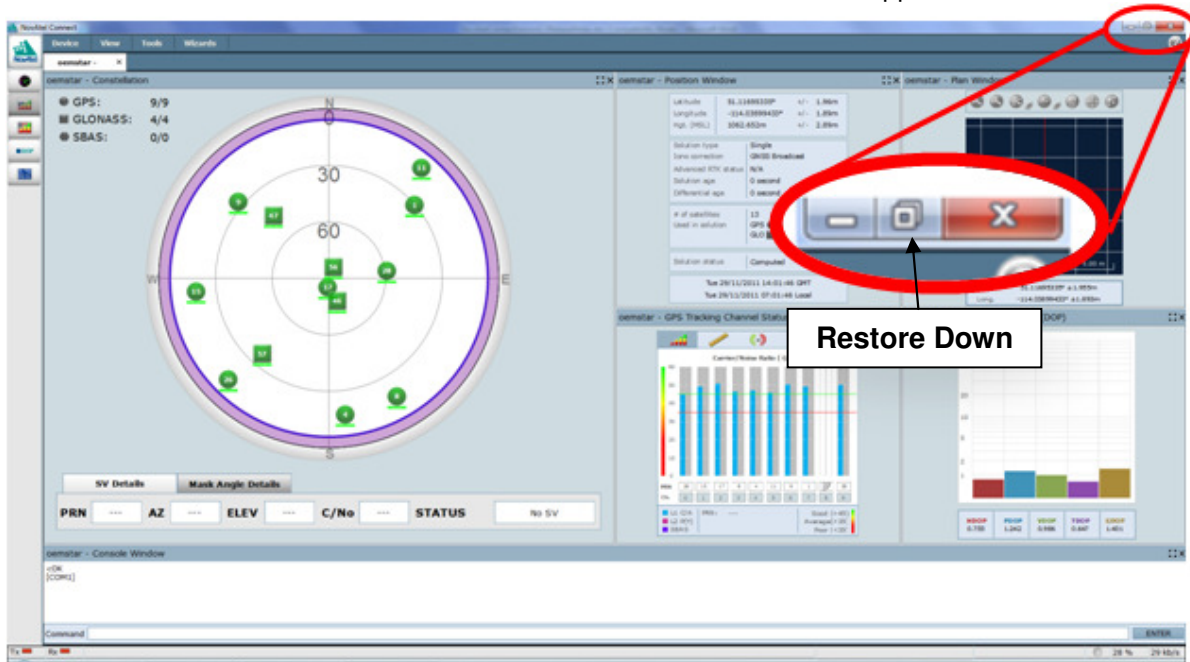
Release Notes for NovAtel Connect Version 1.1.0

1 New Features in NovAtel Connect™ 1.1.0


1.1 Restore Down and Maximize Functions

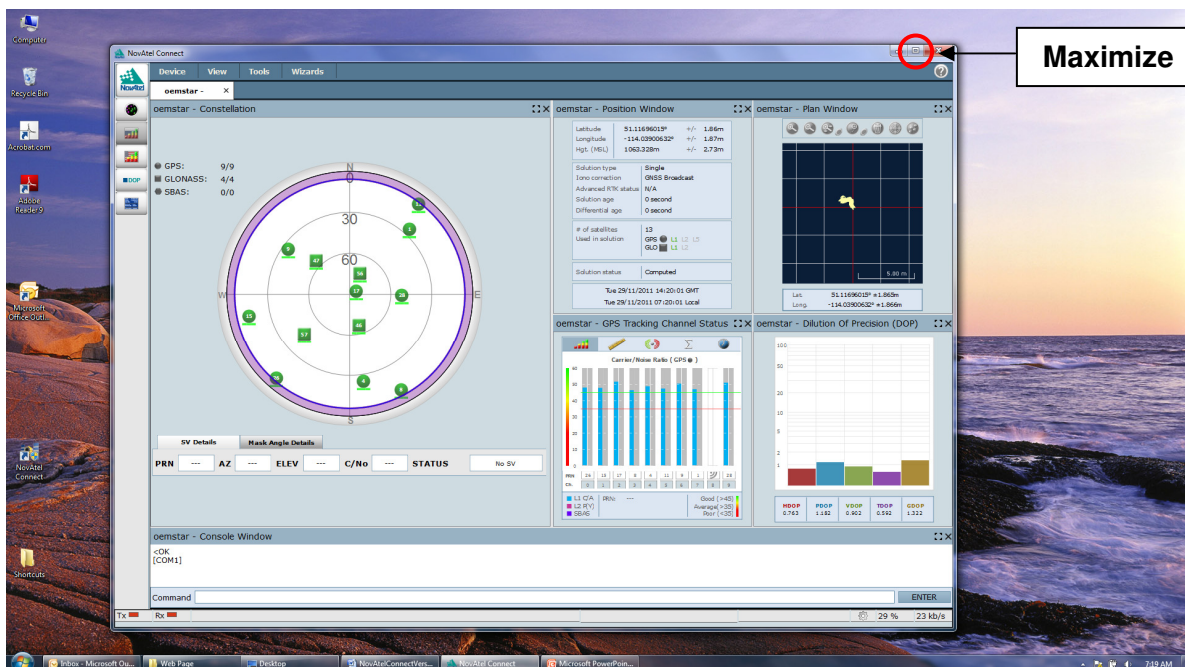
Connect version 1.1.0 now supports the **Restore Down** and **Maximize** functions in Windows 7.

Clicking on **Restore Down**  icon allows the user to resize the entire Connect application.



You can click and drag the borders of the Connect application to re-size it while in Restore Down mode.

Clicking on the **Maximize**  icon will re-size Connect to full screen view.






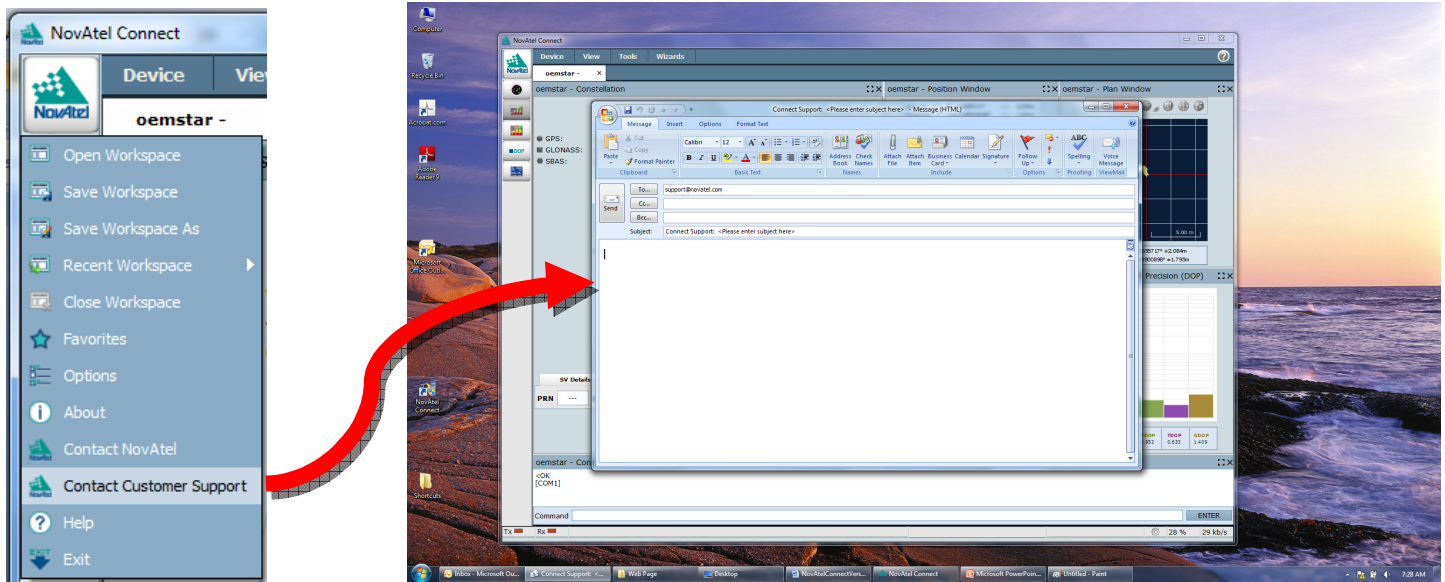
Release Notes for NovAtel Connect Version 1.1.0

1.2 Multiple Display Support

Connect version 1.1.0 now supports operation with multiple displays. You can drag the Connect application between either the primary or secondary display.

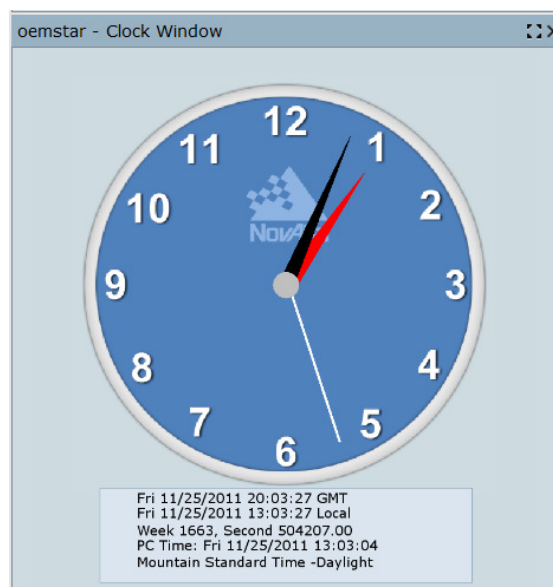
1.3 Contact Customer Service

A new feature under the **NovAtel Button**  provides easy e-mail access to NovAtel Customer Support. Clicking on this option will automatically create an e-mail using Windows Outlook. The customer should fill in the Subject: line and text message body with their enquiry before clicking Send.



1.4 Clock Window Display

The Clock Window display has been upgraded to show current PC time as well as GPS time in GMT and Local formats. The analog clock face now displays Local Time.

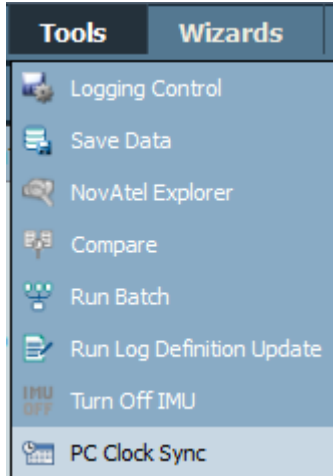




Release Notes for NovAtel Connect Version 1.1.0

1.5 PC Clock Sync

A new feature under the **Tools** menu called **PC Clock Sync** has been added to Connect to allow the user to synchronize his PC clock to the Local time derived from GPS time:




1.6 ALMANAC and MASTERPOS Logs now available under Logging Control

You can now log ALMANAC and MASTERPOS logs using the Logging Control function.

1.7 PORT IN USE warning message alert added

When a user tries to make a connection to a serial port that is already in use, a warning is displayed.

1.8 Dynamic time scale used in Lock Time plot in Tracking Channel Status Windows

The **Lock Time** plot, displayed when the user clicks on the  icon within the **GPS** and **GLONASS Tracking Channel Status Window** displays, had a fixed time scale. Connect 1.1.0 now dynamically adjusts the time scale to make it easier to view the receiver Lock Time.

1.9 Workspaces can be imported from Connect 1.00

Workspaces saved under Connect 1.0.0 can now be imported into future versions of Connect.

1.10 NovAtel Connect and USB drivers on SPAN SE

An issue reported on Connect version 1.0.0 causing poor or slow user interface response when logging for extended periods of time using USB has been corrected.



Release Notes for NovAtel Connect Version 1.1.0

2 Bug Fixes

2.1 Logs left active on virtual serial ports after closing Connect

A bug in Version 1.0.0 would leave a Connect-specific BESTPOSB log running after closing the application. This issue has been fixed.

2.2 Support for IMUs in Span Wizard

Connect version 1.1.0 now supports HG1900, HG1930, IMU-CPT, LITEF, LN200, HG1700, and KVH IMUs in the SPAN Wizard.

2.3 NovAtel Explorer did not work with SPAN-SE FW versions SCD000300RN000 and later

The issue has been fixed.

2.4 Connect incorrectly enabled GL1DE[®] and DGPS configurations on OEMStar receiver with LXGT model

The issue has been fixed.

2.5 Support for commented lines in Run Batch

Connect version 1.1.0 now supports comment lines in the batch files.

2.6 INS Window values not updated

When using SPAN-K FW Version SKS000200AN0008 the fields in the INS window will not always be updated. This issue has been fixed.

2.7 Turn off IMU function did not work

This issue has been fixed.

2.8 Advanced Tracking Window does not display more than two signals per SV

This issue has been fixed. L1, L2C and L2P signal information is displayed.

2.9 Connect does not provide options to setup the receiver in the MAX, FKP and Auto network RTK modes supported with OEM6 receivers.

This issue has been fixed.

2.10 Connect ALIGN[®] heading is negative

When two ALIGN receivers are simultaneously connected to Connect, one of the headings in the display box under the analog compass display may become negative. This issue has been fixed.

2.11 Windows Auto-Hide function does not work properly with Connect

This issue has been fixed.

2.12 Positioning Mode Wizard could not transmit corrections on USB ports

This issue has been fixed.

2.13 RTCAOBS2 message not transmitted

RTCAOBS2 messages are now transmitted out when a base station is set to send out RTCA corrections



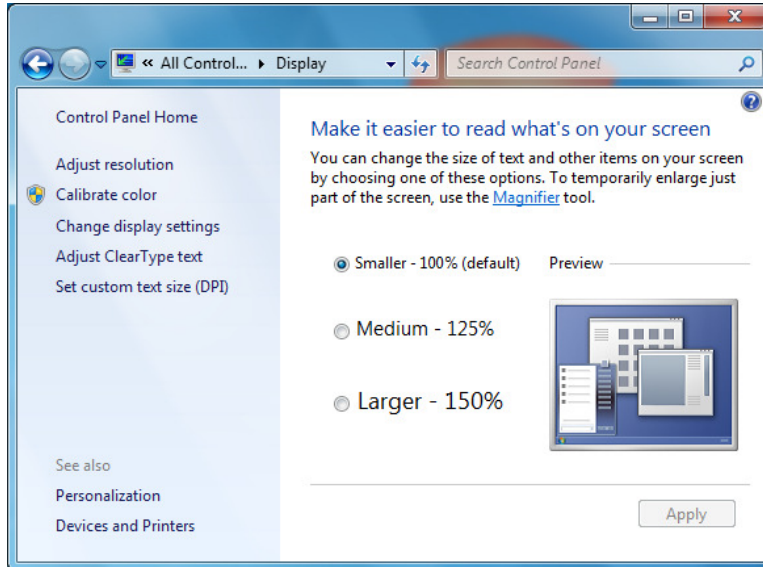
Release Notes for NovAtel Connect Version 1.1.0

3 Known Issues & Guidance

3.1 NovAtel Connect on Windows 7

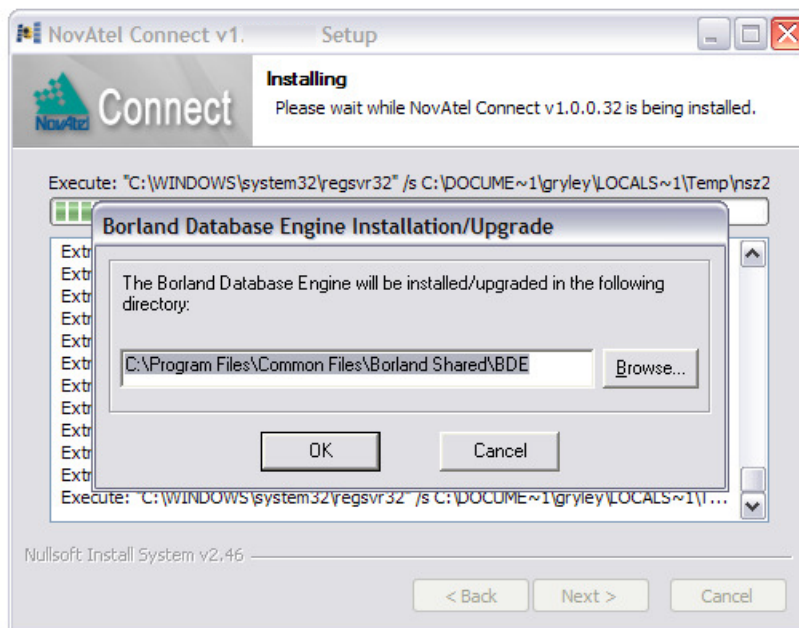
NovAtel Connect works best when “Run as an Administrator”. To run Connect as an Administrator, right click on the application when opening it.

The display works best with setting the Text size to small. With any other text size setting the entire text will not be scaled and displayed correctly.



3.2 BDE Database Installation

During installation of the Connect application, always click **OK** in the **Borland Database Engine Installation/Upgrade** dialog box as shown below:



Clicking on Cancel will cause an error which will prevent proper installation of the Connect application.



Release Notes for NovAtel Connect Version 1.1.0

3.3 Bluetooth Modem Adapter Operation

Connect uses the standard Microsoft Bluetooth Generic Driver. It has been found that some Bluetooth serial adapters (USB-to-BT adapters) will not communicate properly with Connect due to a baud rate configuration issue. You will need to qualify your adaptor with your application and hardware to confirm its operation with NovAtel Connect.

This issue is under investigation and will be resolved in a future release. A suggested work around is to use a Bluetooth adapter that is compatible with the Microsoft Generic Bluetooth Driver. An example of such an adapter is the Belkin F8T016.

3.4 Logging Data to SD Card on SPAN-SE

The option to log data to the SPAN-SE SD Card by selecting the **SD** option from the **Port** pull down menu from within the **Logging Control** window is currently not supported on this version of Connect. The feature will be fully implemented in a future release.

If a user wants to log data to the SD Card, they can do so using the following steps to issue commands to the receiver via the **Console Window** in Connect:

1. Set up the receiver and IMU with as per the instructions in the installation manual.
2. The user must first **create a GPS file** on the SD Card before logging using the following command syntax:

logfile open <FileName.ext>

*(Note: **logfile** is a single word and <FileName.ext> is the name of the log file where the file extension .ext must be either: .GPS, .LOG or .DAT)*

An example showing how to create the file name MyLog.GPS is shown below:

logfile open MyLOG.GPS

3. After creating the file, you can **start logging** the desired data to the file by entering the standard logging commands using the **log file** (two words) command syntax as shown in the example below:

```
log file bestposb ontime 1  
log file rangeb ontime 1  
log file rawimub onnew  
:  
:  
log file inspvash onnew
```

As each log is requested, the data will be logged to the file (e.g. MyLOG.GPS) on the SD Card.

To **stop logging** the data, you must enter the command:

logfile close

This will close the GPS file and save the logged data to the SD Card.

Please note that you cannot specify the data logging duration using this method.